
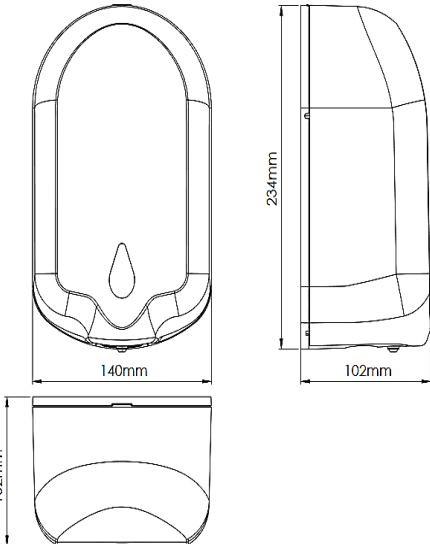




PROJECT		REF		REV	ITEM CODE	
LOCATION		DATE			PAGE	

SANITARY WARE SPECIFICATION SHEET

<p>Item Descriptions</p> <p>Mediclinics (Spain) ABS plastic wall-mounted automatic liquid soap dispenser in bright finish DC supply</p>	<p>Dimensions</p> <p>L140 x W102 x H234 mm</p> <p>Model</p> <p>DJ0050ACS</p> <p>Material/ Finish</p> <p>ABS Plastic / Bright Finish</p> <p>Manufacturer</p> <p>Mediclinics, S.A. (Spain)</p> <p>Supplier</p> <p>Acme Sanitary Ware Co. Ltd Mr. Eric Wong/ Mr. Wilson Hung (852) 2388-7171 / (852) 2710-8012</p> <p>Contact Tel/Fax</p> <p>(852) 2388-7171 / (852) 2710-8012</p> <p>E-mail</p> <p>acme@acmesanitary.com.hk</p> <p>Website</p> <p>www.acmesanitary.com.hk</p>	<p style="text-align: center;">Illustration/ Drawing</p> <div style="text-align: center;">  </div> <div style="text-align: center; margin-top: 20px;">  </div>														
<p>General Description</p> <ul style="list-style-type: none"> • Automatic liquid soap or hand sanitizer gel dispenser, with a capacity of 1.2 liters, made of high-impact ABS plastic. Activates automatically • without the user touching the dispenser to reduce cross-contamination and germ spread. • Elegant and modern design, allowing the dispenser to seamlessly integrate into any space. • Ideal for installation in bathrooms, kitchens, offices, schools, banks, hospitals, hotels, and restaurants. • Equipped with a soap content level indicator, located on the front, allowing constant monitoring of the soap level available inside the dispenser. • Fitted with a security lock that opens with a special key provided, to help prevent tampering, vandalism, and soap theft in public places, while ensuring hygiene. • Operates with four alkaline batteries 4 AA LR6 (not included). • Suitable for liquid soap or hand sanitizing gels. <p>• It is recommended to use liquid soap or gel-type disinfectant soap with the following characteristics: Maximum alcohol content of 80% Density between 0.9 and 1.35 kg/dm³ Viscosity between 500 and 2,500 cps.</p> <p>No hydroalcoholic soaps/gels containing methanol, chlorine, nor solid particles or abrasives are permitted</p> <p>• Wall mounting is achieved through four stainless steel screws with a diameter of 4 mm (supplied) along with corresponding plastic wall plugs with a diameter of 6 mm (also supplied).</p>		<p>Technical specifications</p> <table border="1" style="width: 100%; border-collapse: collapse;"> <tr> <td>Dimensions</td> <td>236 x 144 x 106 mm</td> </tr> <tr> <td>Capacity</td> <td>1.2 L</td> </tr> <tr> <td>Cover</td> <td>3.0 mm</td> </tr> <tr> <td>Base plate thickness</td> <td>2.8 mm</td> </tr> <tr> <td>Inner Tank Thickness</td> <td>1.5 mm</td> </tr> <tr> <td>Net weight</td> <td>0.7 Kg</td> </tr> <tr> <td>Quantity dispensed per pump</td> <td>1.2 ml</td> </tr> </table>	Dimensions	236 x 144 x 106 mm	Capacity	1.2 L	Cover	3.0 mm	Base plate thickness	2.8 mm	Inner Tank Thickness	1.5 mm	Net weight	0.7 Kg	Quantity dispensed per pump	1.2 ml
Dimensions	236 x 144 x 106 mm															
Capacity	1.2 L															
Cover	3.0 mm															
Base plate thickness	2.8 mm															
Inner Tank Thickness	1.5 mm															
Net weight	0.7 Kg															
Quantity dispensed per pump	1.2 ml															

Note:

* All information of the above is for the reference only. No prior notice is made if any changes.





PROJECT		REF		REV	ITEM CODE	
LOCATION		DATE			PAGE	

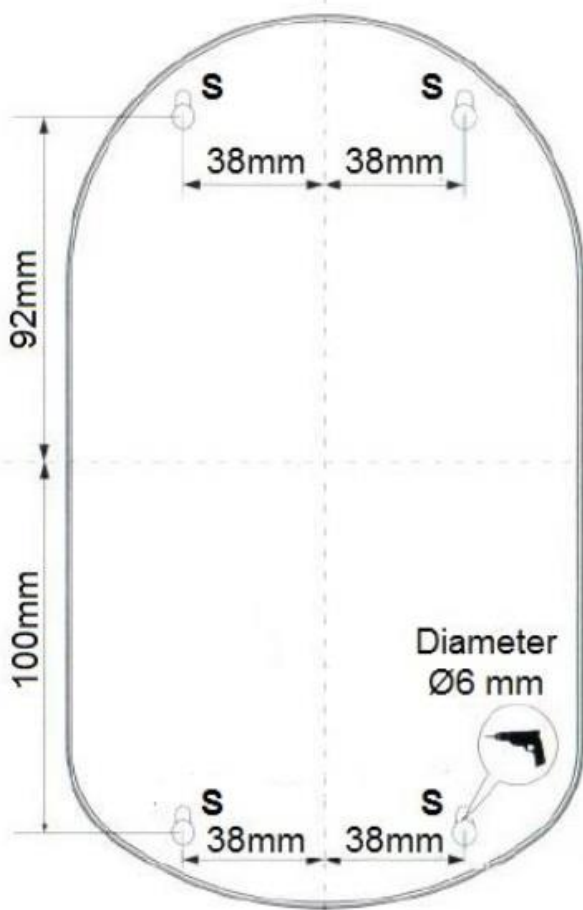
SANITARY WARE SPECIFICATION SHEET

Components & materials

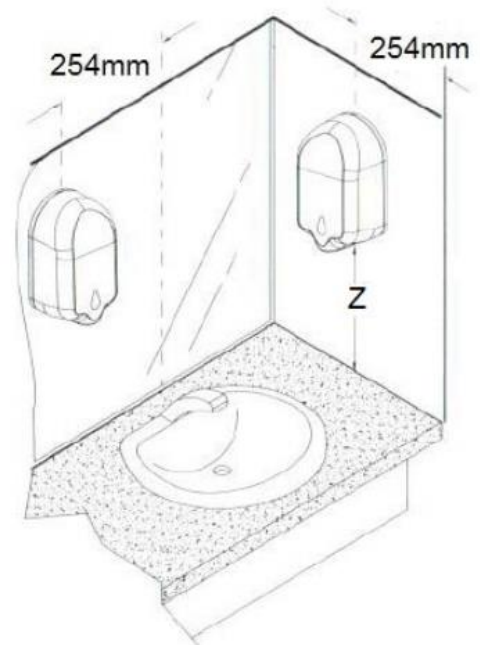
- **COVER:** Manufactured with high-impact ABS plastic, 3.0 mm thick (DJ0050A), or manufactured with satin-finished AISI 304 stainless steel (DJ0050ACS), with a level indicator on its front part. It features an opening at the top thanks to a security lock that opens with the special key provided.
- **WALL PLATE:** made of ABS plastic, 2.8 mm thick. It is mounted on the wall by means of four M4 stainless steel screws (provided) with their corresponding Ø 6mm plastic plugs (also provided).
- **INNER PLASTIC TANK:** made of plastic material, 1.5 mm thick.
- **INFRA-REDDETECTION:** with a 3-10cm hands detection range.
- **VALVE:** anti-drip corrosion resistant that dispenses 1.2ml of soap per service.
- **POWER:** DC 6V thanks to 4 AA LR6 alkaline batteries (**not provided**).

Mounting Template

Fix the soap dispenser through the holes of the wall and floor plates, using the stainless steel screws supplied and taking into account the distances of the points indicated by an "S" in the next figure:



"Z" Minimum distance
 Z > 200mm for a normal countertop
 Z > 300mm for a stainless steel countertop



VERY IMPORTANT:
 Do not install this soap dispenser inside the shower, as its electrical components can be seriously damaged by water and the dispenser stops working. If you choose the configuration with an electric converter, install it away from any source of water.

Note:

* All information of the above is for the reference only. No prior notice is made if any changes.



PROJECT		REF		REV	ITEM CODE	
LOCATION		DATE			PAGE	

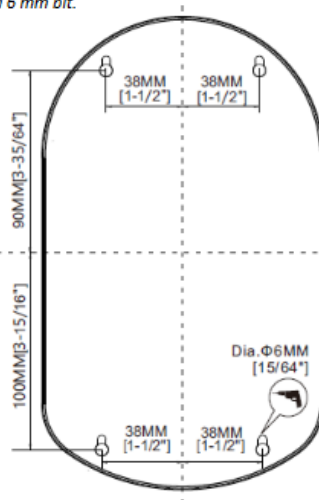
SANITARY WARE SPECIFICATION SHEET

Installation

Drill the wall using the provided mounting template and a 6 mm bit.

See right pictures

- 1 – Open the cover using the provided key
- 2 – Remove the cover according to the picture
- 3 - Firmly screw the unit to the wall (screw bag included)
- 4 – Install the batteries (4 alkaline batteries AA/LR06) according to the shown polarity
- 5 – Fill the tank with soap or sanitizer
- 6 – Assembly the cover according to the picture
- 7 – Close the cover, the dispenser powers on automatically



IMPORTANT - For the first time use or long time no use, please active the sensor by hand around 5 times in order to prime de circuit

Automatic Soap Dispenser Instructions

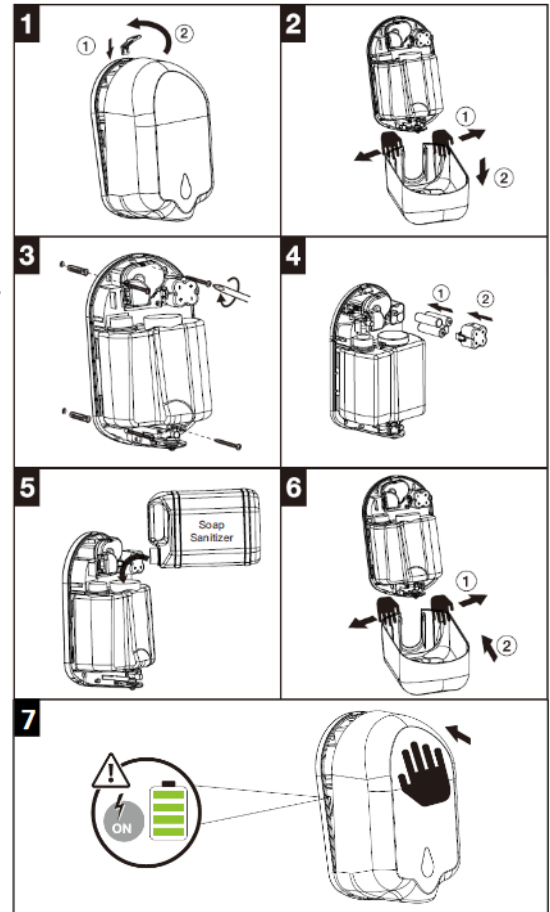
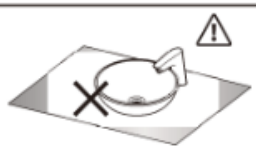
Before installation

Look for a clean and smooth surface to install the Soap Dispenser
 Keep at least 25cm of free space below the unit. Avoid high reflective objects in order to avoid faulty function of the presence sensor.

ATTENTION: Check operation of unit while holding in place by hand BEFORE permanent installation

Specifications

Body material	>ABS<
Dimensions	234 x 140 x 102 mm
Soap Tank Capacity	1200 ml
Battery	6 x Alkaline AA/LR6 (1.5V)
Room Temperature	+5°C – +40°C
Dispensed soap quantity	1,2 ml
Suggested viscosity (liquid-gel)	500-2500 cP
Density	0,9 – 1,35 kg/dm ³
Max. Alcohol content	80%
MEDICLINICS, S.A. Industria, 54 E-08025 BARCELONA SPAIN	
Do not use products with	methanol, chlorine nor abrasive particles



Trouble shooting

SYMPTOM	CORRECTIVE ACTION
No soap/sanitizer dispensed on hands	Check soap qualities, properties and level in soap/sanitizer tank. Check sensor cover for dirt obscuring the lens. Check battery charge level. Check spout nozzle, soap dispensing tube for clogs. Check if the ON/OFF lever [Installation "7"] at right location. Check if the soap tank locates at right hanging bracket [Installation "3"]. Active the dispenser sensor several times for the first time use or long time no use the dispenser. Some soap [Sanitizer] is blocked the pipe if long time without use the dispenser.
Low volume soap dispensed	Remove soap tank & wash out spout nozzle, clean dispense tube by water. Check if the tube is loose without cross-threaded.
Soap leaks	Check if the soap tank leakage. Check if dispense tube connection loose. Check disposable soap pump for defects and/or replace.

Maintenance



Note:

